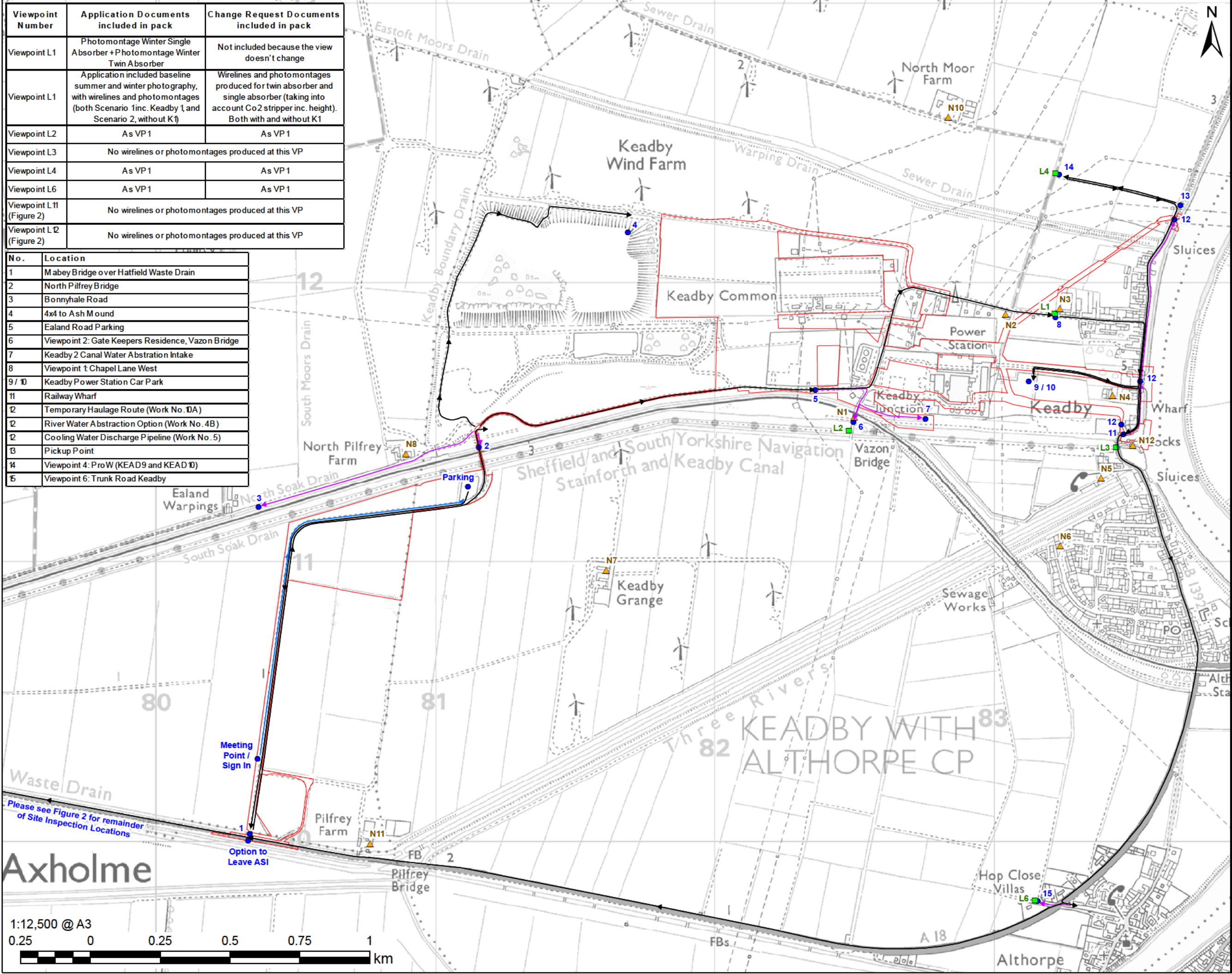


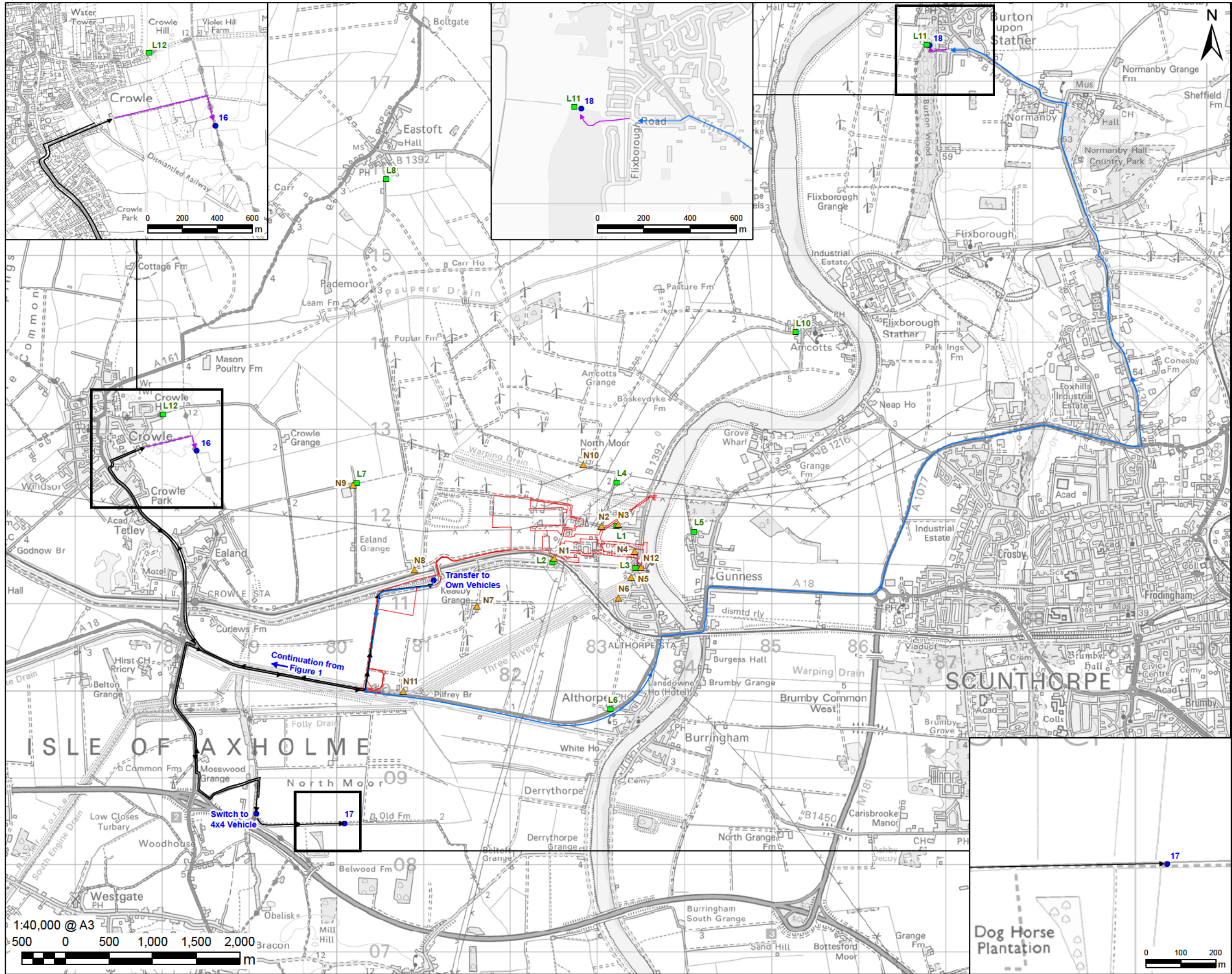
Viewpoint Number	Application Documents included in pack	Change Request Documents included in pack
Viewpoint L1	Photomontage Winter Single Absorber + Photomontage Winter Twin Absorber	Not included because the view doesn't change
Viewpoint L1	Application included baseline summer and winter photography, with wirelines and photomontages (both Scenario 1 inc. Keadby 1, and Scenario 2, without K1)	Wirelines and photomontages produced for twin absorber and single absorber (taking into account Co2 stripper inc. height). Both with and without K1
Viewpoint L2	As VP1	As VP1
Viewpoint L3	No wirelines or photomontages produced at this VP	
Viewpoint L4	As VP1	As VP1
Viewpoint L6	As VP1	As VP1
Viewpoint L11 (Figure 2)	No wirelines or photomontages produced at this VP	
Viewpoint L12 (Figure 2)	No wirelines or photomontages produced at this VP	

No.	Location
1	Mabey Bridge over Hatfield Waste Drain
2	North Pilfrey Bridge
3	Bonnyhale Road
4	4x4 to Ash Mound
5	Ealand Road Parking
6	Viewpoint 2: Gate Keepers Residence, Vazon Bridge
7	Keadby 2 Canal Water Abstraction Intake
8	Viewpoint 1: Chapel Lane West
9/10	Keadby Power Station Car Park
11	Railway Wharf
12	Temporary Haulage Route (Work No. 10A)
12	River Water Abstraction Option (Work No. 4B)
12	Cooling Water Discharge Pipeline (Work No. 5)
13	Pickup Point
14	Viewpoint 4: ProW (KEAD9 and KEAD10)
15	Viewpoint 6: Trunk Road Keadby



Revision: 01 Drawn: JW Checked: CN Approved: RW Date: 29/03/2022
Filename: K:\07 CAD & GIS\02_Maps\Site_Inspection_ Examination\Figure_1_Site_Inspection_March2022_Figure_20220321.mxd

This drawing has been prepared for the use of AECOM's client. It may not be used, modified, reproduced or relied upon by third parties, except as agreed by AECOM or as required by law. AECOM accepts no responsibility, and denies any liability whatsoever, to any party that uses or relies on this drawing without AECOM's express written consent. Do not scale this drawing. All measurements must be obtained from the stated dimensions.



- LEGEND**
- The Order Limits
 - ▲ Noise Sensitive Receptor
 - Landscape Viewpoint
 - Site Inspection Location
 - Site Inspection Route
 - Applicants Vehicles
 - Own Vehicles
 - On Foot

No.	Location
16	PRoW (CROW 14) South of Eastoft Road
17	PRoW (BELT 26)
18	Viewpoint 1ft PRoW (BURT 171)

NOTES
Reproduced from Ordnance Survey digital map data © Crown copyright 2022. All rights reserved. Licence number 0100031673.

ISSUE PURPOSE
SITE INSPECTION
PROJECT NUMBER
60625943
SHEET TITLE
Optional Site Inspection Locations March 2022
SHEET NUMBER
Figure 2

This drawing has been prepared for the use of AECOM's client. It may not be used, modified, reproduced or relied upon by third parties, except as agreed by AECOM or as required by law. AECOM accepts no responsibility, and denies any liability whatsoever, to any party that uses or relies on this drawing without AECOM's express written consent. Do not scale this document. All measurements must be obtained from the as-drawn dimensions.